



**PARAHYANGAN**  
FO & BUSINESS PARK

**BEST CHOICE** | **#1 SMART**  
**OFFICE & WAREHOUSE**  
**MULTIFUNCTION**



LOCATION

# PARAHYANGAN FO & BUSINESS PARK



“Live Here,  
Work Next Door,  
Play Below

## MARKETING OFFICE

BATUJAJAR WEST BANDUNG REGENCY  
WEST JAVA



## PARAHYANGAN FO & BUSINESS PARK

BATUJAJAR WEST BANDUNG REGENCY  
WEST JAVA

developed by  
PT HUNI KARYA PARAHYANGAN

- **FASILITAS 1**  
merupakan kawasan industri sehingga mendapatkan fasilitas kemudahan akses.
- **FASILITAS 2**  
terletak di dekat Kota Mandiri Kota Baru Parahyangan dengan berbagai fasilitas hunian, leisure, dsb.
- **FASILITAS 3**  
fasilitas keamanan yang dilengkapi dengan one gate system dan CCTV lingkungan.
- **FASILITAS 4**  
fasilitas infrastruktur yang dilengkapi dengan jaringan infrastruktur fisik terpadu dan infrastruktur modern pendukung kegiatan.





**10** MENIT

EXIT TOL PADALARANG

**COMMERCIAL AREA**

**WAREHOUSING & INDUSTRY**

**OFFICE & WORKSHOP**

**FACTORY OUTLET**





# LOCATION

KPB

GATE TOL PADALARANG



JL. RAYA BATUJAJAR

TOL PADALARANG - CILEUNYI

DEKAT DENGAN  
GATE TOL  
PADALARANG

± 9 MENIT  
PERJALANAN

“It is highly  
Accessible and  
Strategically  
Located within  
the City itself



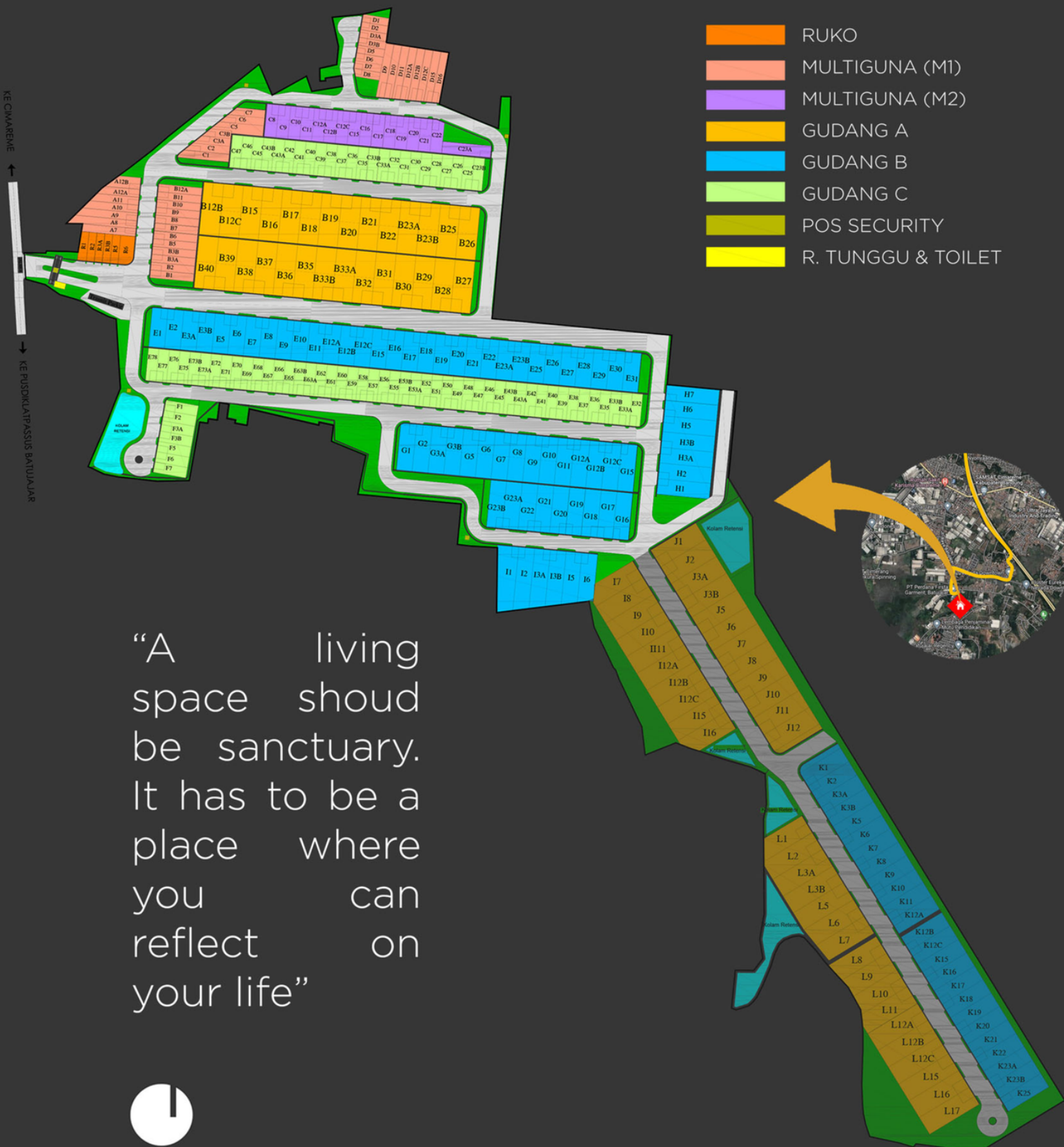
PARAHYANGAN FO &  
BUSINESS PARK





# SITEPLAN

- RUKO
- MULTIGUNA (M1)
- MULTIGUNA (M2)
- GUDANG A
- GUDANG B
- GUDANG C
- POS SECURITY
- R. TUNGGU & TOILET



“A living space should be sanctuary. It has to be a place where you can reflect on your life”





PARAHYANGAN  
FO & BUSINESS PARK

**READY  
TO BEST  
OFFER**

FOR  
OUR PARTNER....?





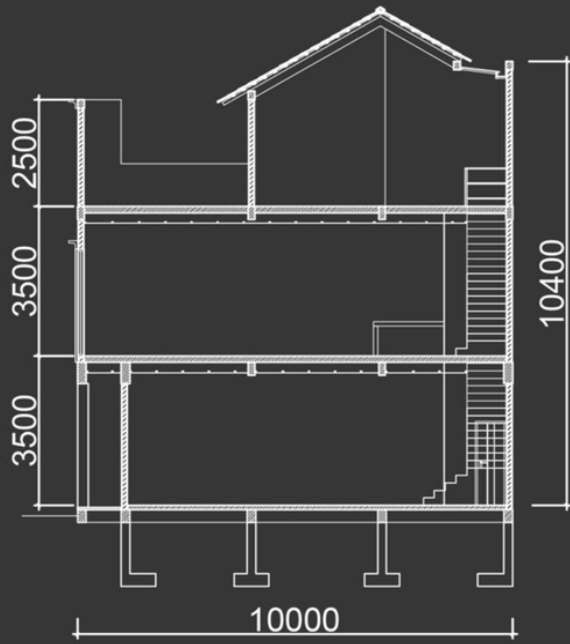
LAND SIZE  
**132**  
sqm

BUILDING SIZE  
**156**  
sqm

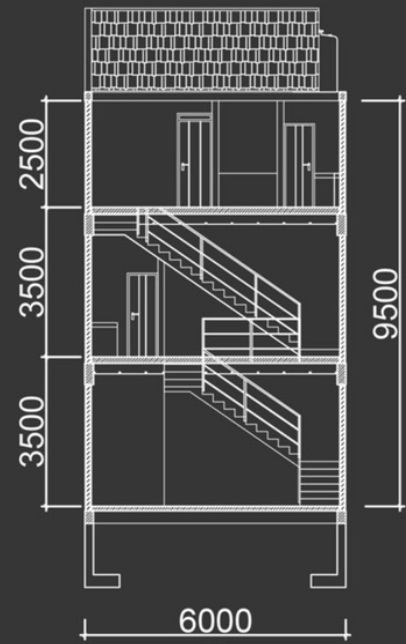
## ■ TIPE RUKO

- |                         |   |
|-------------------------|---|
| ● PONDASI               | : TIANG PANCANG & BETON BERTULANG   |
| ● DINDING               | : BATA PLESTER ACI FINISHING CAT  |
| ● LANTAI                | : LOADING DOCK COR BETON  |
| ● LANTAI GUDANG         | : COR BETON<br>FINISHING EPOXY  |
| ● LANTAI DINDING KM/ WC | : KERAMIK   |
| ● LANTAI ATAS           | : HOMOGENOUS TILE   |
| ● SANITAIR              | : CLOSET EX TOTO ATAU SETARA  |
| ● KUSEN                 | : ALUMINIUM (TAMPAK DEPAN)<br>BESI (PINTU BELAKANG)<br>PVC (UNTUK KM/ WC) |
| ● PINTU GUDANG          | : SECTION DOOR (GALVALUM)   |
| ● KONSTRUKSI ATAP       | : BAJA  |
| ● PENUTUP ATAP          | : ZINCALUM  |
| ● LISTRIK               | : PLN 2200 VA   |
| ● KEAMANAN              | : CCTV KAWASAN  |
| ● INTERNET              | : FIBER OPTIC   |

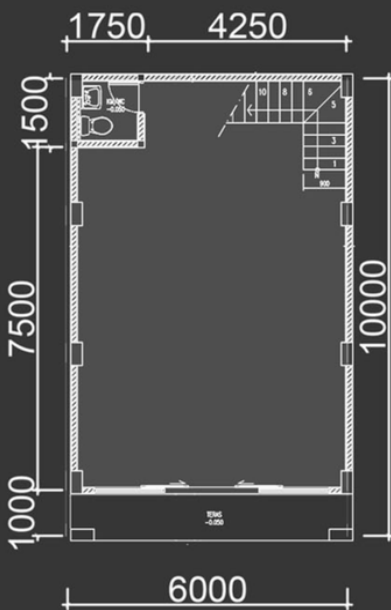
“A Urban Landscape and Community  
which is **Vibrant, Happening, &  
Exciting**”



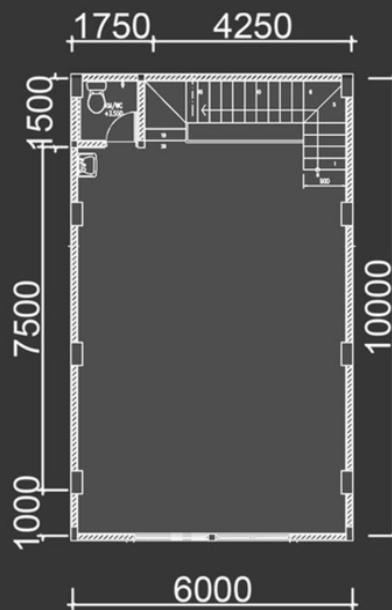
SECTION 1



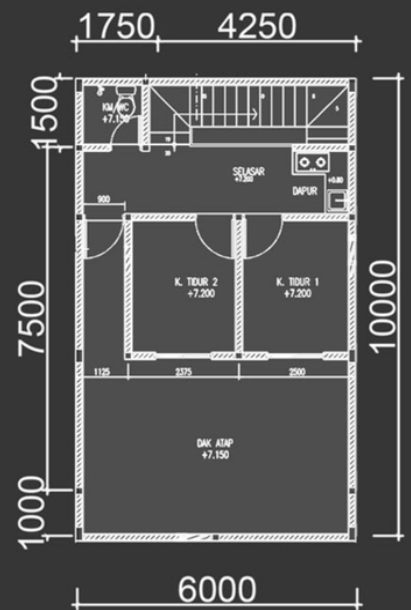
SECTION 2



1st FLOOR



2nd FLOOR



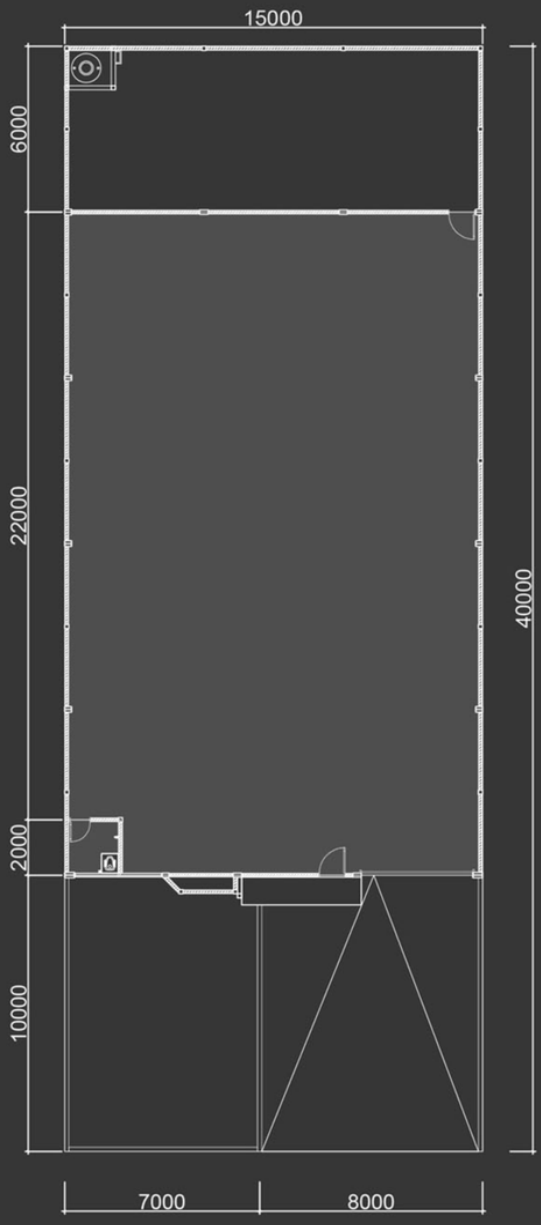
3rd FLOOR





LAND SIZE  
**600**  
sqm

BUILDING SIZE  
**360**  
sqm

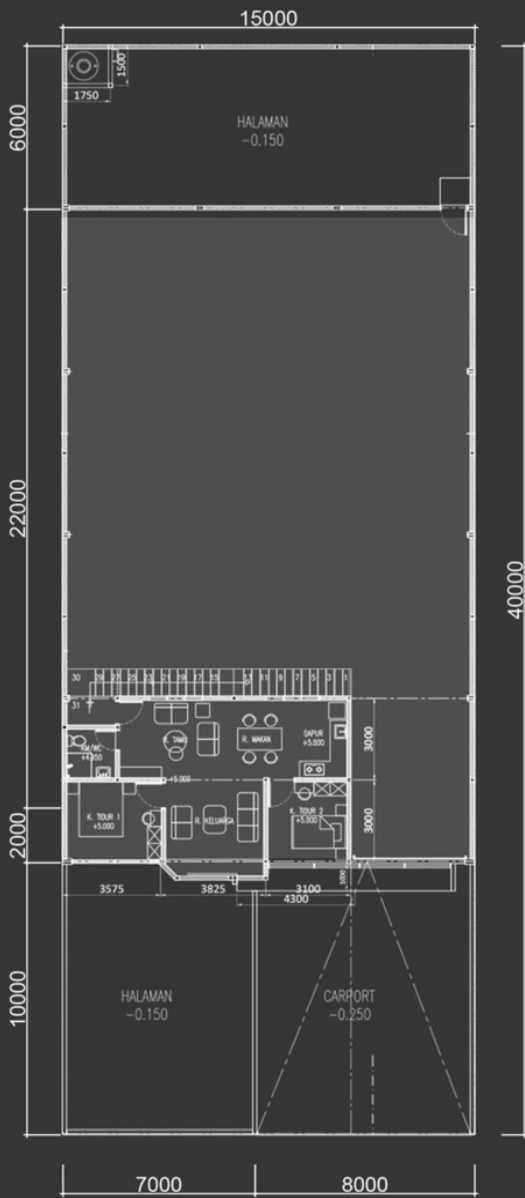


## ■ TIPE GUDANG A

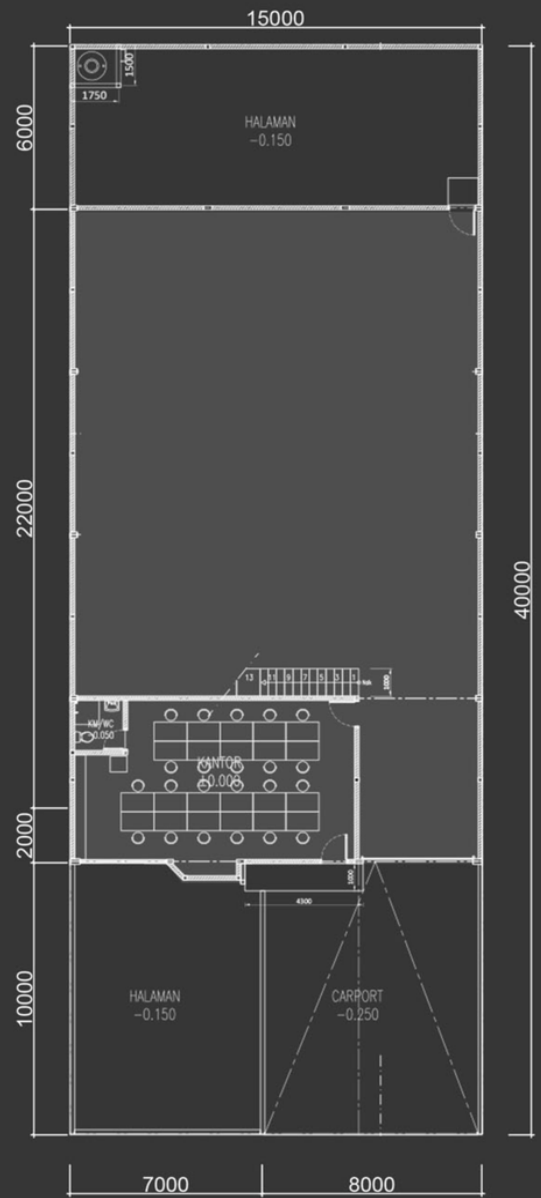
- PONDASI : TIANG PANCANG & BETON BERTULANG
- DINDING : BATA PLESTER ACI FINISHING CAT
- LANTAI : LOADING DOCK COR BETON
- LANTAI GUDANG : COR BETON FINISHING EPOXY
- LANTAI DINDING KM/ WC : KERAMIK
- LANTAI ATAS : HOMOGENOUS TILE
- SANITAIR : CLOSET EX TOTO ATAU SETARA
- KUSEN : ALUMINIUM (TAMPAK DEPAN)
- PINTU GUDANG : BESI (PINTU BELAKANG)
- KONSTRUKSI ATAP : PVC (UNTUK KM/ WC)
- PENUTUP ATAP : SECTION DOOR (GALVALUM)
- LISTRIK : BAJA
- KEAMANAN : ZINCALUM
- INTERNET : PLN 2200 VA
- : CCTV KAWASAN
- : FIBER OPTIC

1<sup>st</sup> FLOOR

### ALTERNATIF PENGEMBANGAN: HUNIAN



1<sup>st</sup> FLOOR



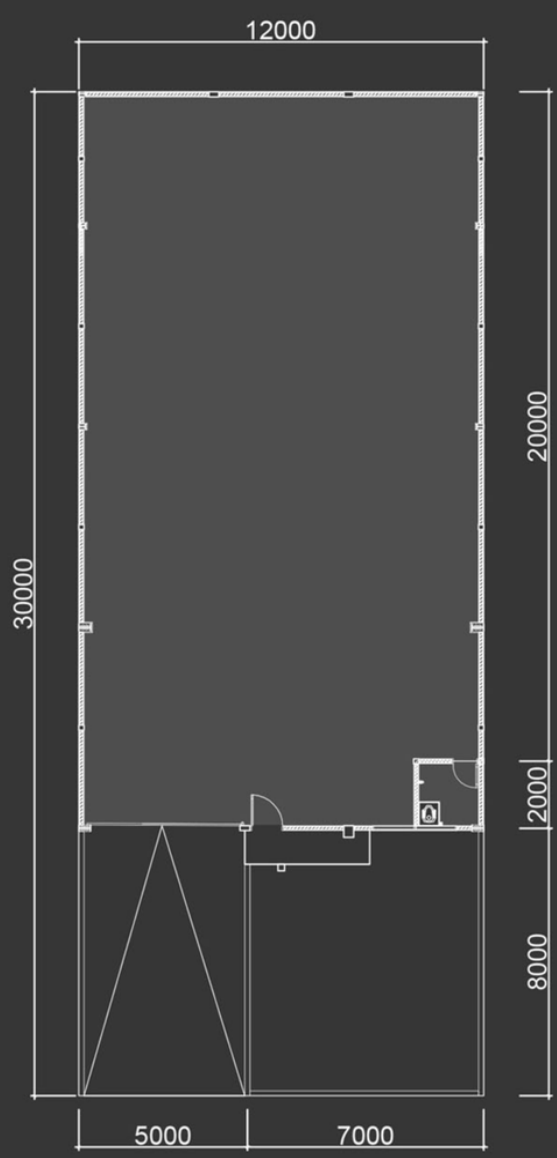
2<sup>nd</sup> FLOOR





LAND SIZE  
**360**  
sqm

BUILDING SIZE  
**264**  
sqm

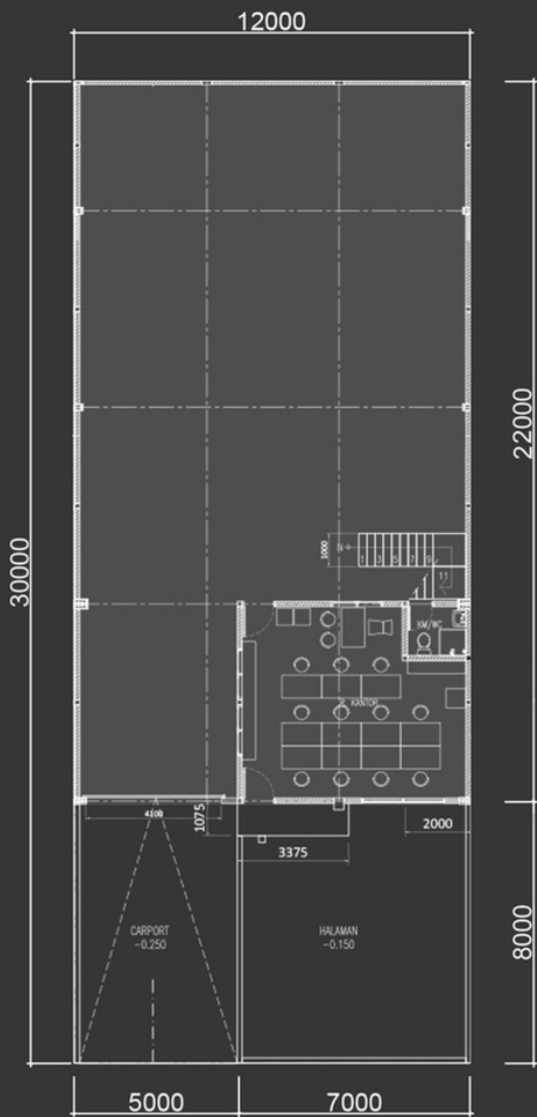


## ■ TIPE GUDANG B1

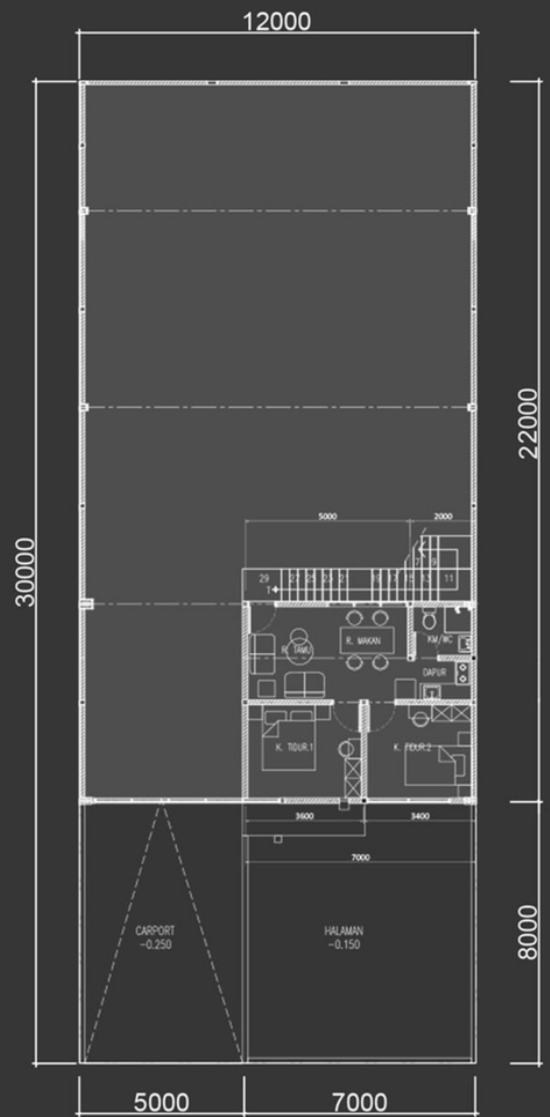
- PONDASI : TIANG PANCANG & BETON BERTULANG
- DINDING : BATA PLESTER ACI FINISHING CAT
- LANTAI : LOADING DOCK COR BETON
- LANTAI GUDANG : COR BETON FINISHING EPOXY
- LANTAI DINDING KM/ WC : KERAMIK
- LANTAI ATAS : HOMOGENOUS TILE
- SANITAIR : CLOSET EX TOTO ATAU SETARA
- KUSEN : ALUMINIUM (TAMPAK DEPAN)
- PINTU GUDANG : BESI (PINTU BELAKANG)
- KONSTRUKSI ATAP : PVC (UNTUK KM/ WC)
- PENUTUP ATAP : SECTION DOOR (GALVALUM)
- LISTRIK : BAJA
- KEAMANAN : ZINCALUM
- INTERNET : PLN 2200 VA
- : CCTV KAWASAN
- : FIBER OPTIC

1<sup>st</sup> FLOOR

ALTERNATIF PENGEMBANGAN: HUNIAN



1<sup>st</sup> FLOOR



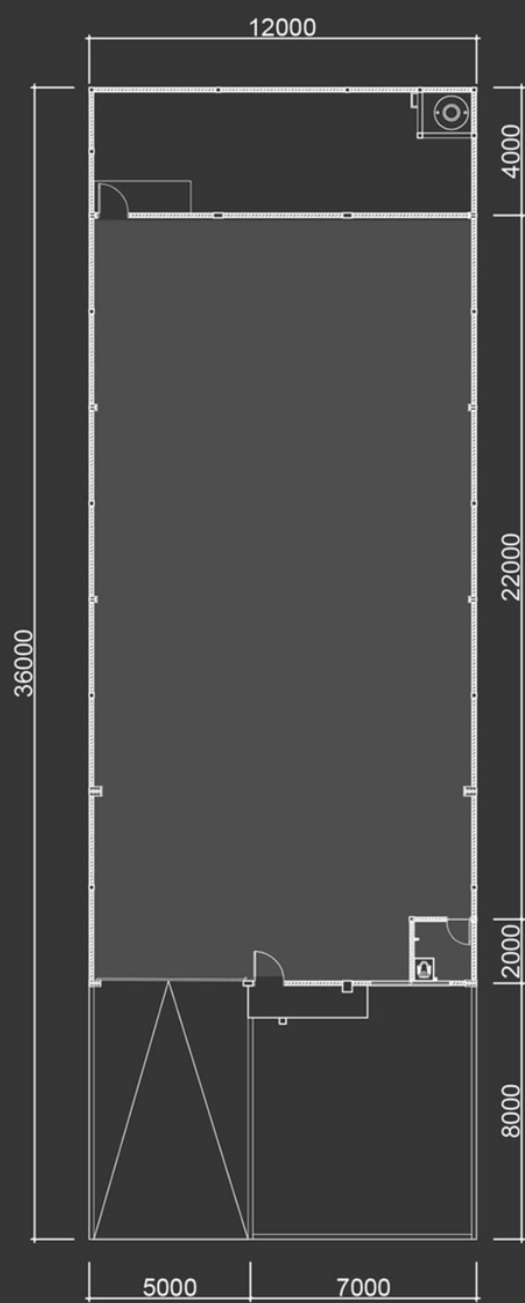
2<sup>nd</sup> FLOOR





LAND SIZE  
**432**  
sqm

BUILDING SIZE  
**288**  
sqm



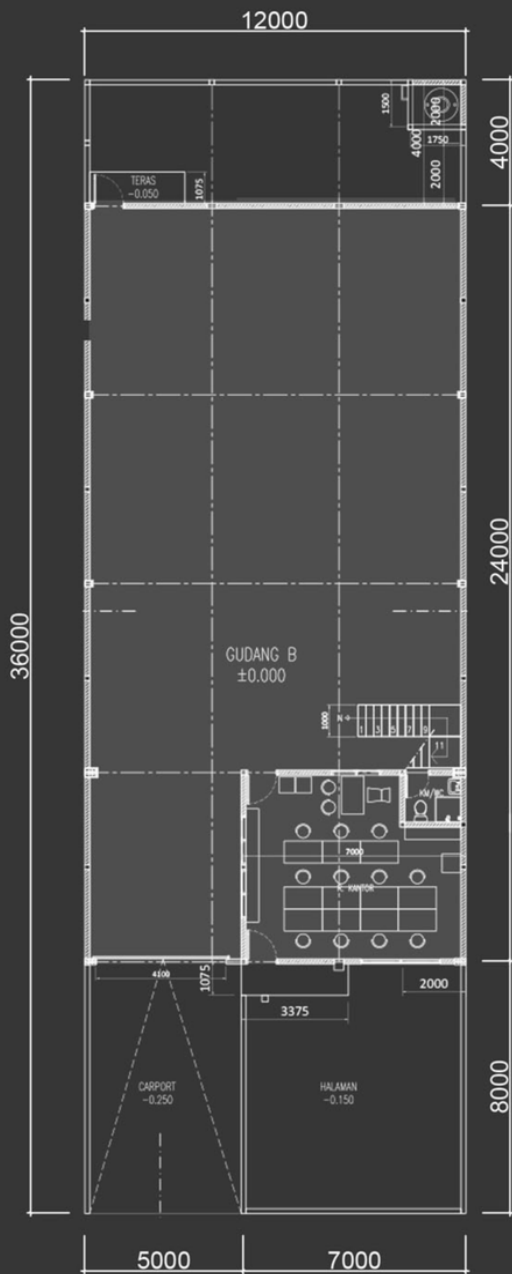
1<sup>st</sup> FLOOR

## ■ TIPE GUDANG B2

- PONDASI : TIANG PANCANG & BETON BERTULANG
- DINDING : BATA PLESTER ACI FINISHING CAT
- LANTAI : LOADING DOCK COR BETON
- LANTAI GUDANG : COR BETON FINISHING EPOXY
- LANTAI DINDING KM/ WC : KERAMIK
- LANTAI ATAS : HOMOGENOUS TILE
- SANITAIR : CLOSET EX TOTO ATAU SETARA
- KUSEN : ALUMINIUM (TAMPAK DEPAN)
- PINTU GUDANG : BESI (PINTU BELAKANG)
- KONSTRUKSI ATAP : PVC (UNTUK KM/ WC)
- PENUTUP ATAP : SECTION DOOR (GALVALUM)
- LISTRIK : BAJA
- KEAMANAN : ZINCALUM
- INTERNET : PLN 2200 VA
- : CCTV KAWASAN
- : FIBER OPTIC



### ALTERNATIF PENGEMBANGAN: HUNIAN



1<sup>st</sup> FLOOR

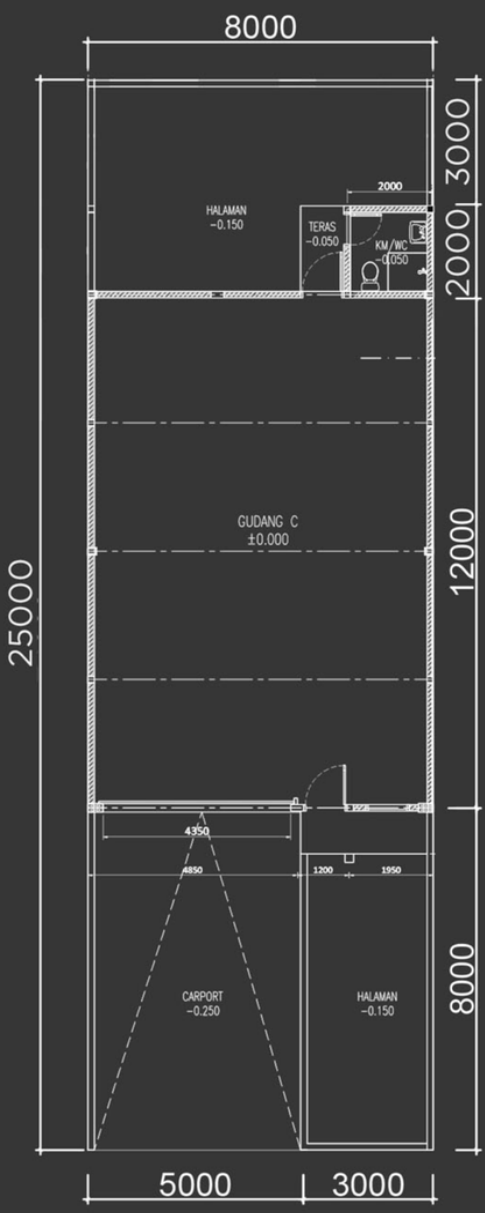


2<sup>nd</sup> FLOOR



LAND SIZE  
**200**  
sqm

BUILDING SIZE  
**96**  
sqm

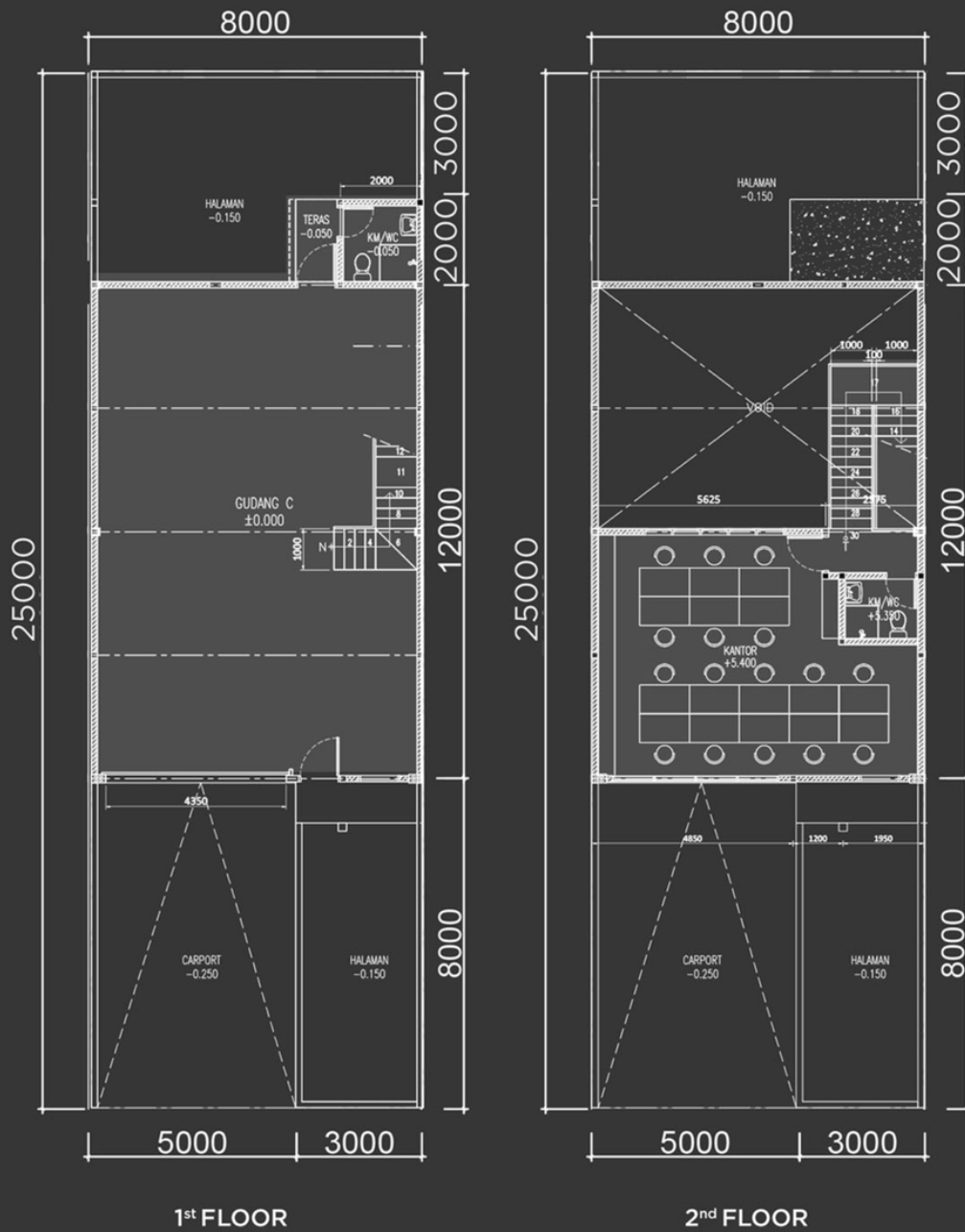


1<sup>st</sup> FLOOR

## TIPE GUDANG C

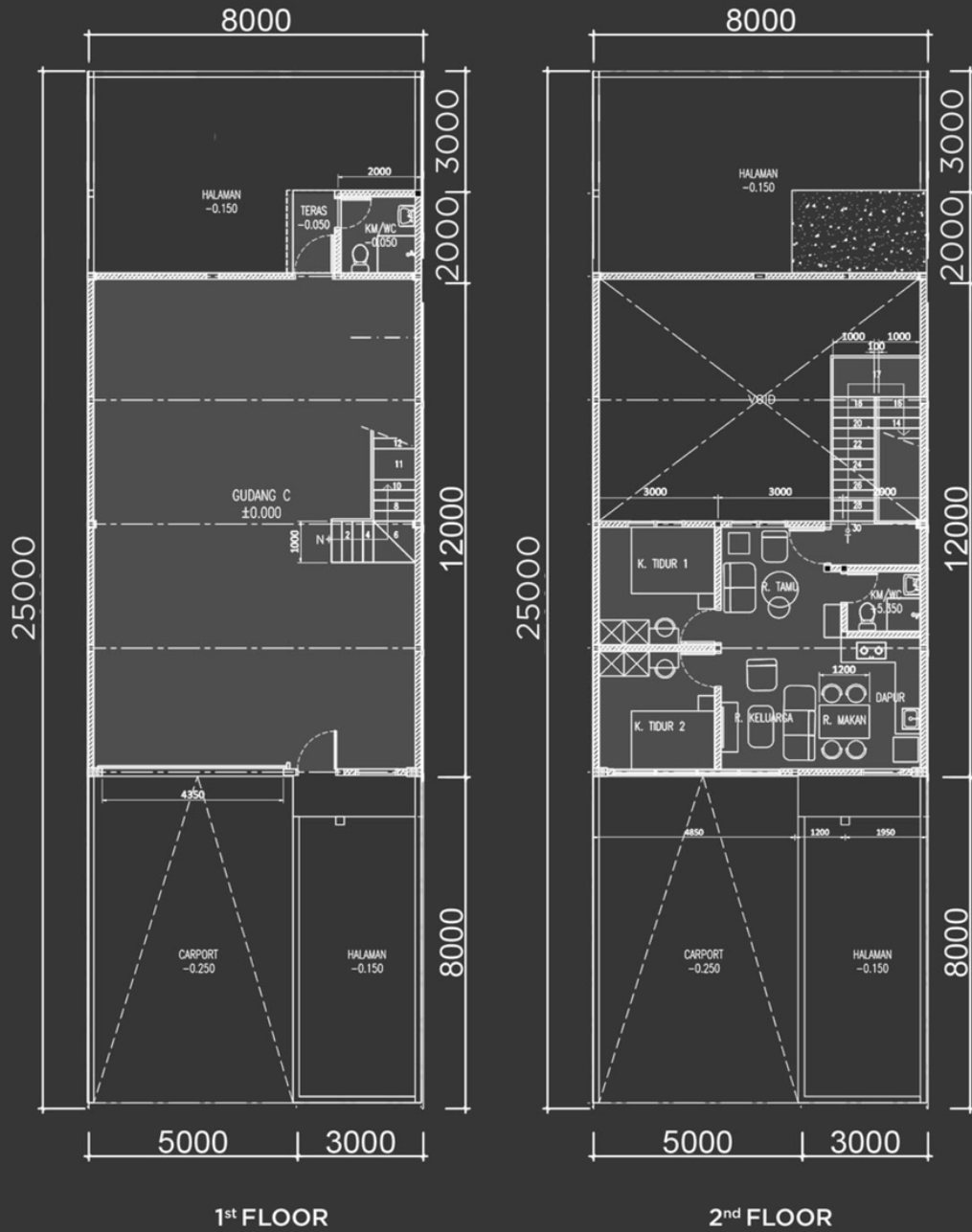
- PONDASI : TIANG PANCANG & BETON BERTULANG
- DINDING : BATA PLESTER ACI FINISHING CAT
- LANTAI : LOADING DOCK COR BETON
- LANTAI GUDANG : COR BETON FINISHING EPOXY
- LANTAI DINDING KM/ WC : KERAMIK
- LANTAI ATAS : HOMOGENOUS TILE
- SANITAIR : CLOSET EX TOTO ATAU SETARA
- KUSEN : ALUMINIUM (TAMPAK DEPAN) BESI (PINTU BELAKANG) PVC (UNTUK KM/ WC)
- PINTU GUDANG : SECTION DOOR (GALVALUM)
- KONSTRUKSI ATAP : BAJA
- PENUTUP ATAP : ZINCALUM
- LISTRIK : PLN 2200 VA
- KEAMANAN : CCTV KAWASAN
- INTERNET : FIBER OPTIC

ALTERNATIF PENGEMBANGAN: KANTOR





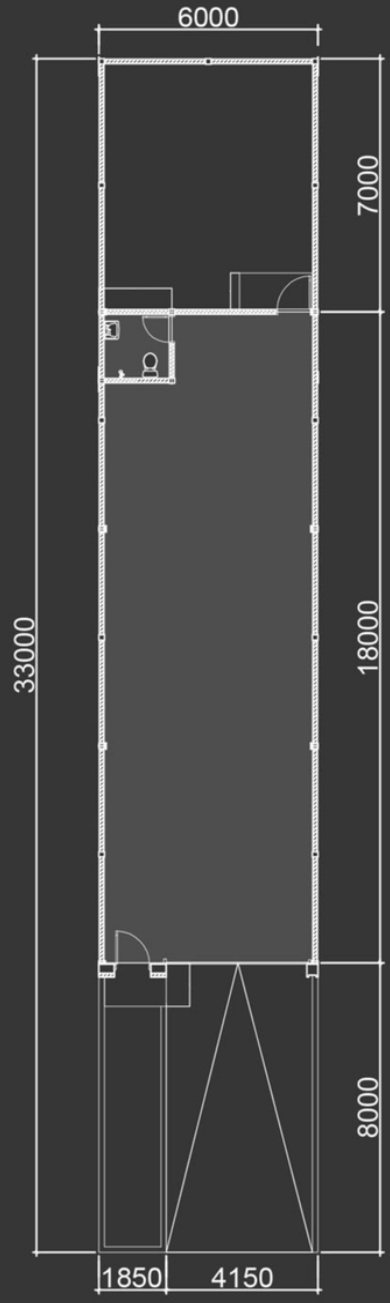
ALTERNATIF PENGEMBANGAN: HUNIAN





LAND SIZE  
**198**  
sqm

BUILDING SIZE  
**108**  
sqm



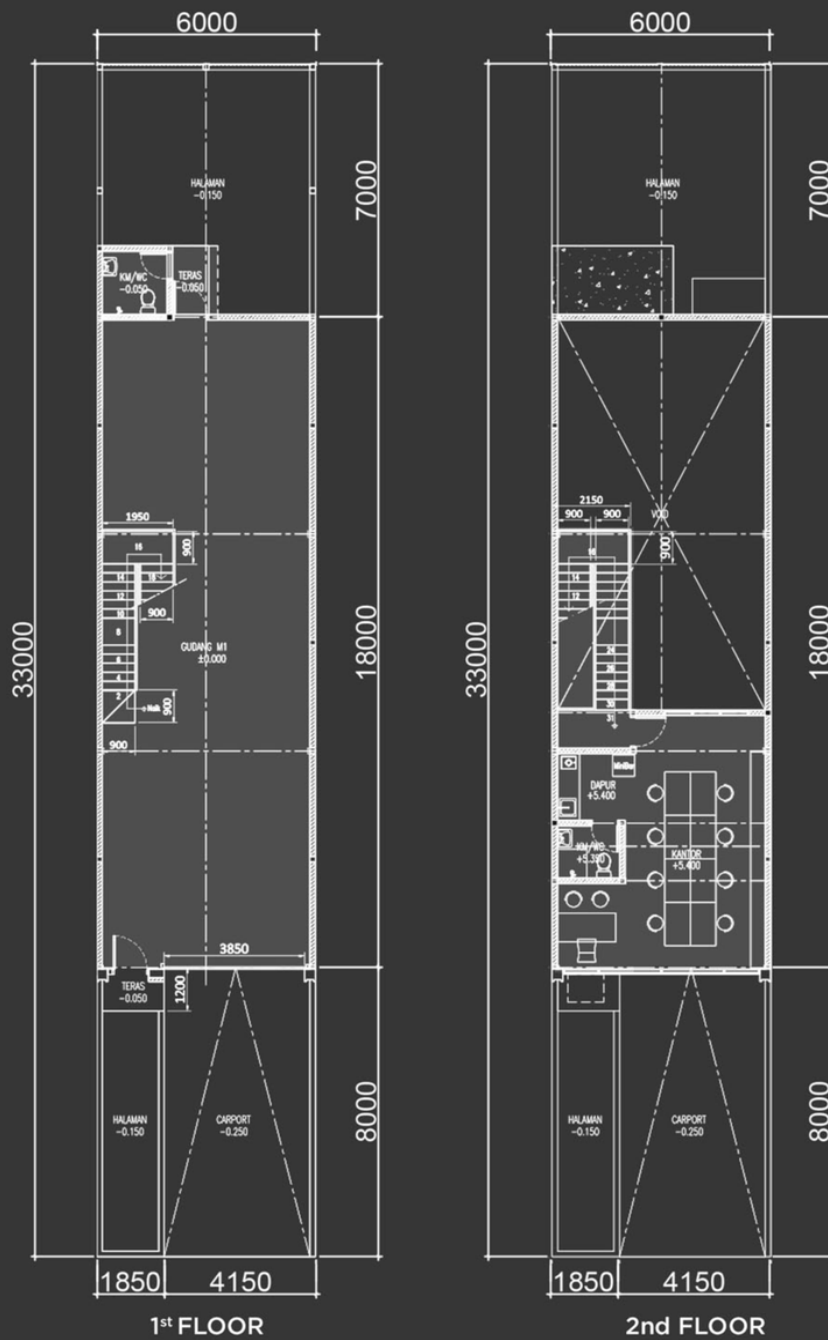
1<sup>st</sup> FLOOR

## TIPE GUDANG M1

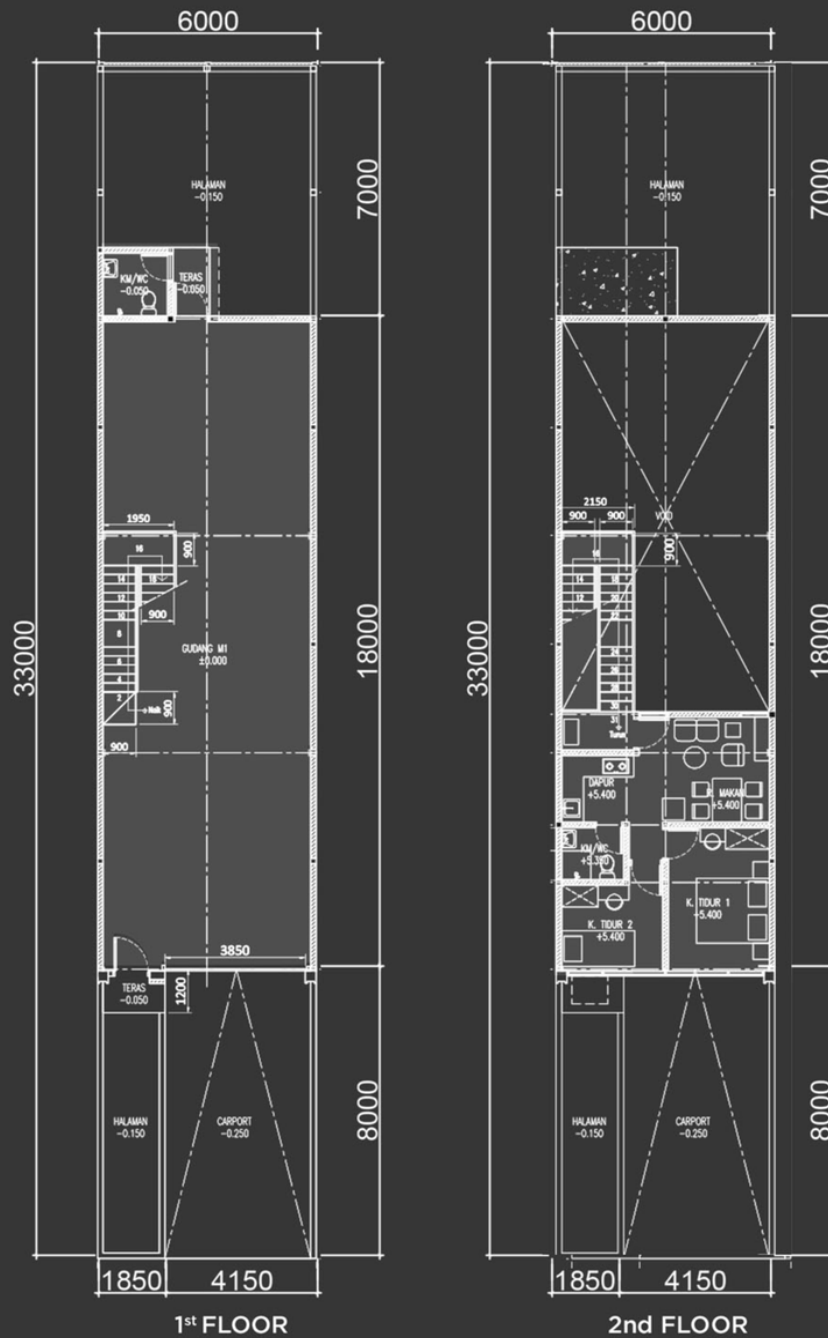
- PONDASI : TIANG PANCANG & BETON BERTULANG
- DINDING : BATA PLESTER ACI FINISHING CAT
- LANTAI : LOADING DOCK COR BETON
- LANTAI GUDANG : COR BETON FINISHING EPOXY
- LANTAI DINDING KM/ WC : KERAMIK
- LANTAI ATAS : HOMOGENOUS TILE
- SANITAIR : CLOSET EX TOTO ATAU SETARA
- KUSEN : ALUMUNIUM (TAMPAK DEPAN)  
BESI (PINTU BELAKANG)  
PVC (UNTUK KM/ WC)
- PINTU GUDANG : SECTION DOOR (GALVALUM)
- KONSTRUKSI ATAP : BAJA
- PENUTUP ATAP : ZINCALUM
- LISTRIK : PLN 2200 VA
- KEAMANAN : CCTV KAWASAN
- INTERNET : FIBER OPTIC



ALTERNATIF PENGEMBANGAN: KANTOR



### ALTERNATIF PENGEMBANGAN: HUNIAN

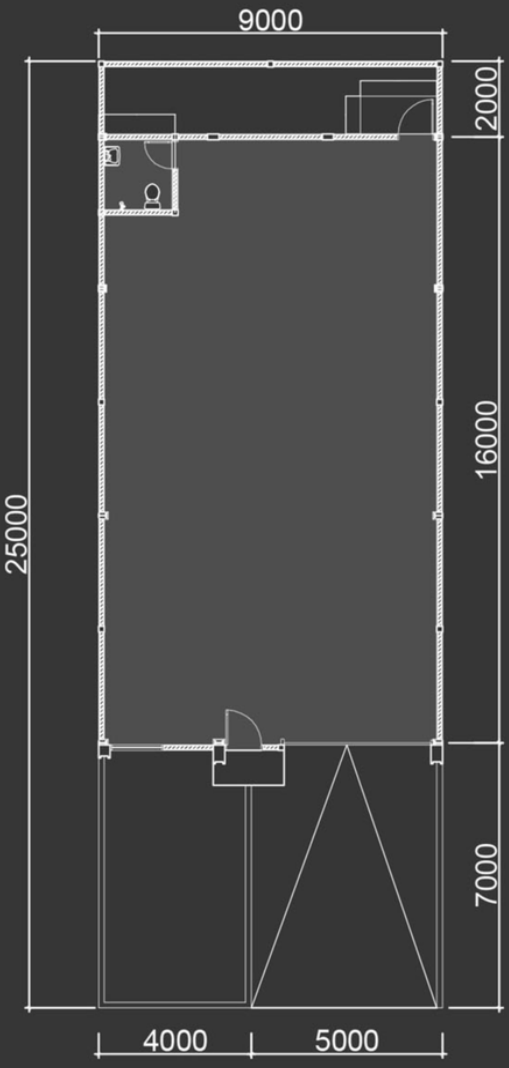






LAND SIZE  
**223**  
sqm

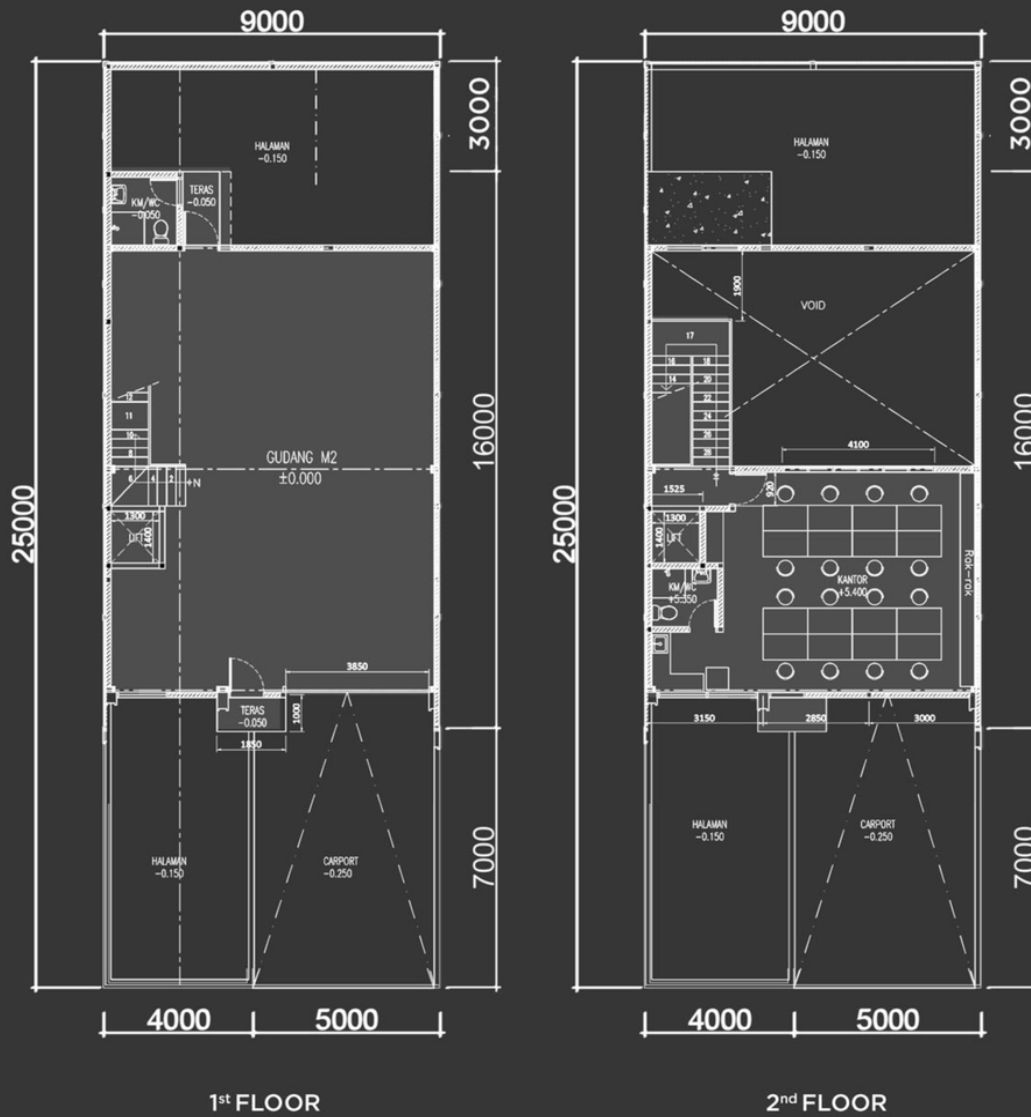
BUILDING SIZE  
**144**  
sqm



## TIPE GUDANG M2

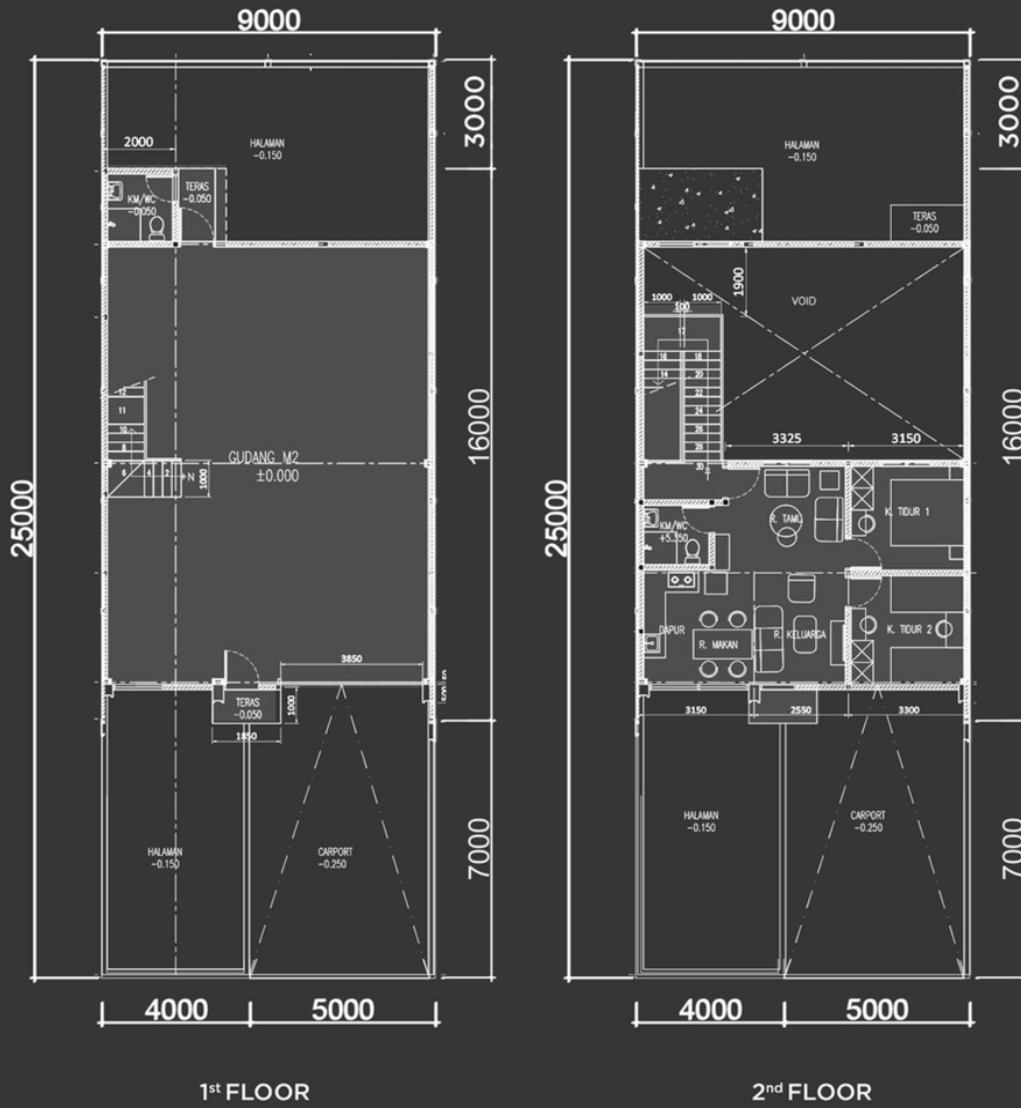
- PONDASI : TIANG PANCANG & BETON BERTULANG
- DINDING : BATA PLESTER ACI FINISHING CAT
- LANTAI : LOADING DOCK COR BETON
- LANTAI GUDANG : COR BETON FINISHING EPOXY
- LANTAI DINDING KM/ WC : KERAMIK
- LANTAI ATAS : HOMOGENOUS TILE
- SANITAIR : CLOSET EX TOTO ATAU SETARA
- KUSEN : ALUMINIUM (TAMPAK DEPAN)
- PINTU GUDANG : BESI (PINTU BELAKANG)
- KONSTRUKSI ATAP : PVC (UNTUK KM/ WC)
- PENUTUP ATAP : SECTION DOOR (GALVALUM)
- LISTRIK : BAJA
- KEAMANAN : ZINCALUM
- INTERNET : PLN 2200 VA
- : CCTV KAWASAN
- : FIBER OPTIC

### ALTERNATIF PENGEMBANGAN: KANTOR





ALTERNATIF PENGEMBANGAN: HUNIAN





**PARAHYANGAN**  
FO & BUSINESS PARK

**GROW  
YOUR  
BUSINESS**

& SEE YOU AT  
MARKETING GALERY

MARKETING GALERY :  
JL. BATU JAJAR CIAMPEL  
BANDUNG BARAT

MARKETING & INFORMASI :

**0821-1999-2500**

DEVELOPER :



**PT. HUNI  
KARYA  
PARAHYANGAN**